

DART



Distributed Authorization Reporting Tool

Minimize Your Audit and Regulatory Compliance Challenges

IT departments face many obstacles as they strive to keep pace in an ever-changing business security environment where audits, regulatory requirements and potential security risks are commonplace, and ongoing compliance now defines how organizations protect their data. Enterprise directories, like Active Directory® (AD), have allowed companies to organize and allocate who should have access to their network resources by establishing users and groups. The resources that users or groups have authorization to access are often delegated by local settings on servers distributed throughout an IT environment. While AD management tools can provide your organization with information about users and groups in the directory, these tools lack the ability to perform discovery on distributed systems, which identify where users and groups are assigned permissions throughout an IT environment.

The DART Solution

To help organizations track user access enterprise-wide, CSS developed the Distributed Authorization Reporting Tool (DART), a compliance tool that extends an organization's security view and provides critical data to better protect it from security risks. Integrating DART allows organizations an opportunity to inventory file shares centrally and generate reports based on data collected from AD and member servers. Utilization of DART provides the following benefits:

- **Audit Preparedness** — Customized on-demand data reports that assist in preparation for internal or third-party audits.
- **Compliance** — Verification of internal compliance to ensure that security practice matches the security process.
- **Visibility**— Identify all instances of shared data in your organization and who has access.
- **Clarity** — Identify the user's level of granted access to resources, as well as, how they obtained that access.

Additional Benefits

- **Build** and show relationships between users and groups in your directories and groups on your servers.
- **Identify** misapplications of user rights and places where data is overly exposed.
- **Agentless** — no need to install software agents on every server throughout your IT infrastructure.



Common Questions

- I have a large number of file shares. How can I assure that only the right people have access to them?
- Where are all my file shares?
- Am I granting users too much access to restricted information?
- How can I tell who has access to what?

DART Report Descriptions

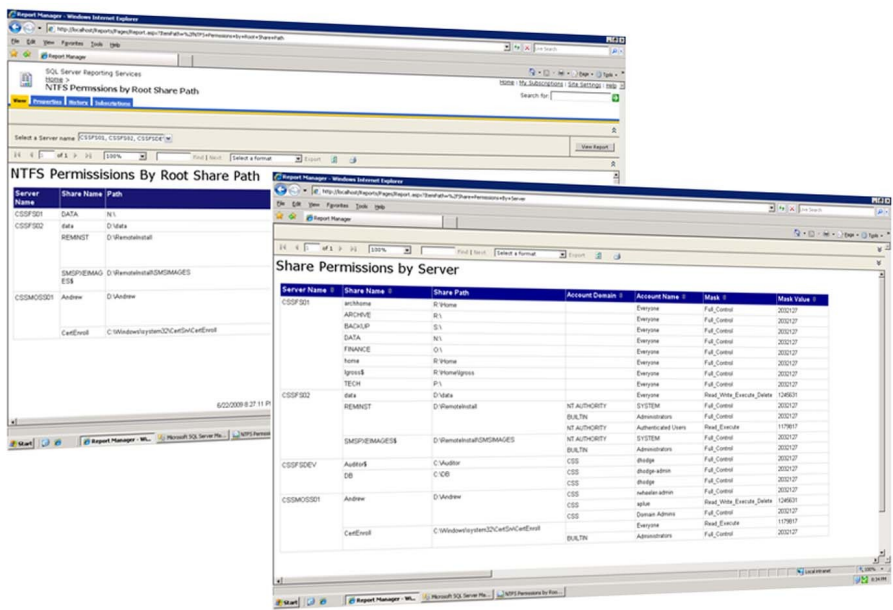
Account for file shares and directories within file shares.

Share Reports	Required Technology
<ul style="list-style-type: none">Share InformationShare Permissions by ServerShare Permissions by UserOpen Shares	<ul style="list-style-type: none">Windows Server® 2008 and IISSQL Server® 2008SQL Server® Reporting Services.Net Framework

NTFS Permission Reports	Account and Group Reports
<ul style="list-style-type: none">NTFS PermissionsNTFS Permissions by Root ShareNTFS Permissions with Broken Inheritance	<ul style="list-style-type: none">Local AccountsUser Member Of

Example Reports

NTFS Permissions by Root Share Path
Share Permissions by Server



Licensing Program

License options are perpetual and include either unlimited server installations with pricing aligned to the number of employees, or an option for a site-wide unlimited use license.

Annually we will ask that you align your agreement with the number of total license you've used throughout the year. This annual license alignment allows you to actively manage what you have used as well as project increased need as your organization continues to grow.

CSS is committed to providing the very best in technical support to licensed users of our software products, ensuring the reliability of our products and maximum utilization of our tools.

- Connect directly to security experts at CSS
- Phone, e-mail support responses within one business day
- Free software updates, upgrades and new version releases

An annual support contract begins on the date that the software license is purchased, or on the date that the previous year's contract expires, and is active for 12 continuous months.

CSS can provide additional support during implementation, custom report development and configuring additional member/local servers. Support is purchased at a daily rate.

About CSS

CSS is an information security services firm with operations throughout North America and headquartered in Cleveland, Ohio. We specialize in three critical areas of information security: identity & access management, secure infrastructure & governance, and risk & compliance. CSS provides consulting services, managed security services, security as a service and security software tools in order to meet our clients' needs. For more information and for a complete list of branch offices, visit www.css-security.com or e-mail sales@css-security.com.